

Instruction card

Circlelock

Safety- and user instructions

Control panel*

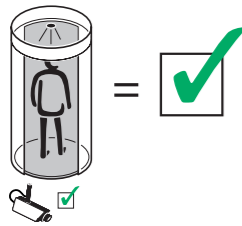
Security systems

Fail-safe / Fail-secure*

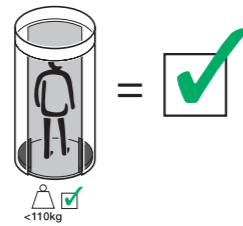
Maintenance

Security systems

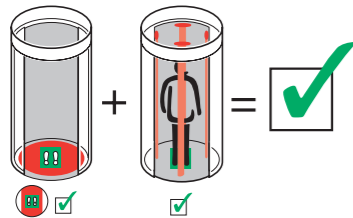
1 StereoVision



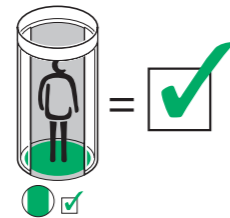
2 Weight system



3 Two-zone contact mat with sensors.

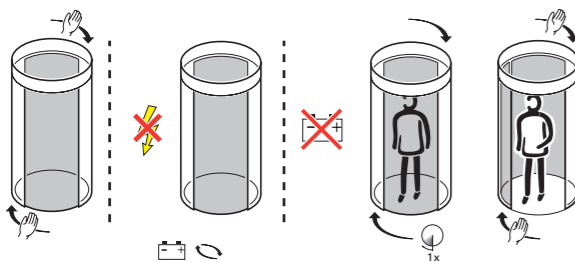


4 One-zone contact mat

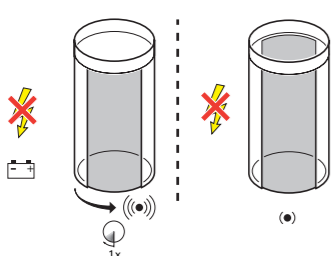


Fail-safe / Fail-secure*

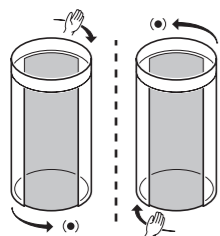
1 Fail-safe*



2 Fail-secure*



3 Fail-secure / fail-safe combinations*



Maintenance

Caution! Don't use water near the drive units or control boxes (and StereoVision*).

Warning! Switch OFF the power supply of the Circlelock during maintenance or other work.

Daily: Check daily the operation of the Circlelock.

Weekly: Vacuum clean the bottom door guide rail. Clean the anodised, powder coated and/or stainless steel surfaces with a wet cloth.

Monthly: Clean the anodised, powder coated and/or stainless steel surfaces with a wet cloth and a non aggressive soap.

Yearly: The Circlelock needs a major maintenance check once a year. This has to be done by Boon Edam B.V. or your agent. This applies as well for repairs.

Explanation of the symbols

Secured side



Non secured side

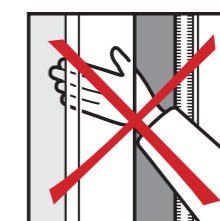
	Door wing movement		Last action doorwing
	Manual door wing movement		Acoustic signal
	Door wing movement will be stopped		Verification by security system
	Door wing fail-secure		Verification successful
	Door wing will not open		Verification not successful
	Door wing will not close		Biometric authentication successful
	Free passage		Biometric authentication not successful
	Max. permitted weight of 110kg. (weight system)		Biometric authentication
	Authorisation after using card reader		Authentication possible within fixed time (Default 5 seconds)
	Max. 3 authorisations in memory after using card reader		No power supply
	Passage possible within 8 seconds		Camera
	Battery back up		Locked
	Battery back up empty		Option

Dealer

For further information: consult the operating manual.



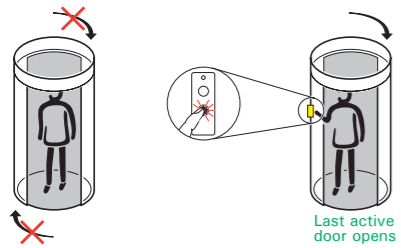
Check the emergency- and safety devices and the general operation of the Circlelock daily!



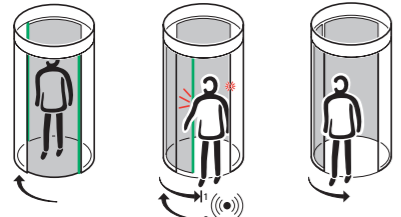
Safety- and user instructions

A. The Circlelock safety devices

1 Emergency pushbutton

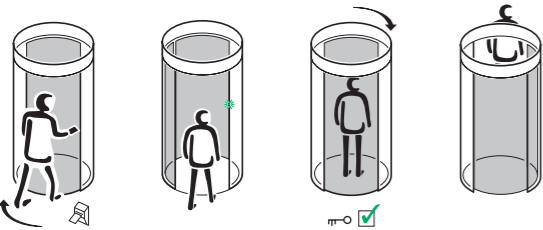


2 Safety rail on sliding door



B. The working principals of the Circlelock

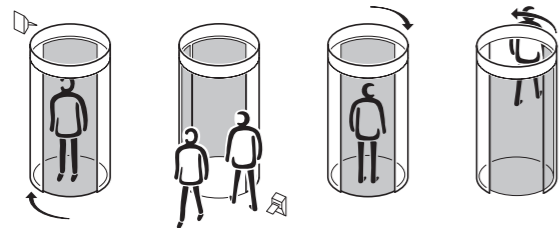
1 One authorised user



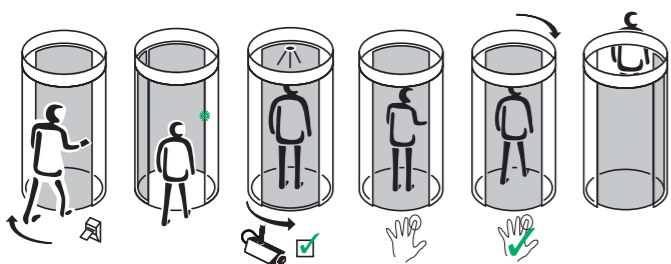
2. One authorised user (from secured side), one unauthorized user (from non secured side)



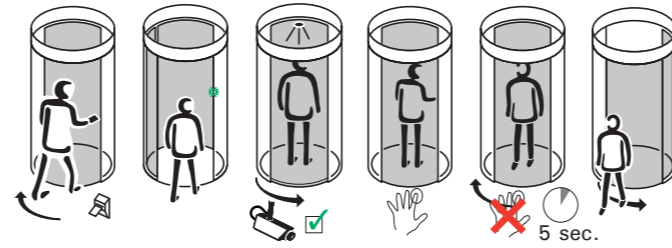
3 Two authorised users (from secured and non secured side)



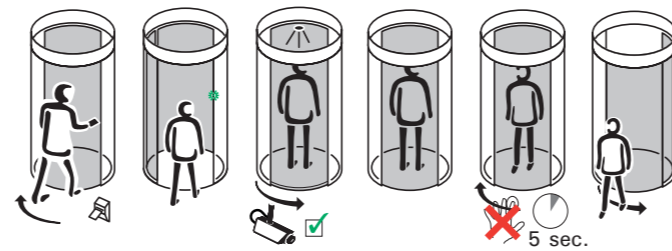
4 Authorised user (StereoVision with biometric authentication)



5 Unauthorised user (StereoVision with biometric authentication)

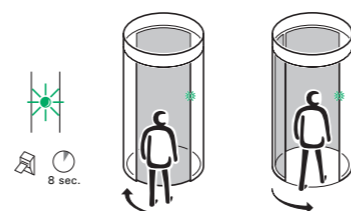


6 Biometric time out (StereoVision with biometric authentication)

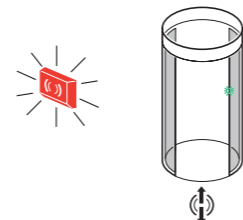


C. The signallamps on the Circlelock

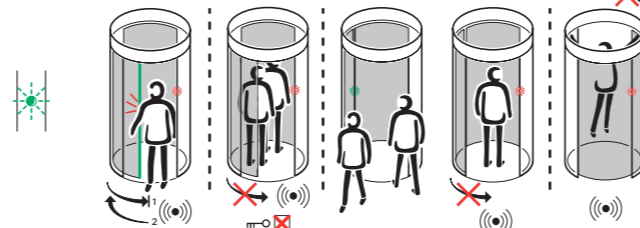
1 Green illuminates (after card reader use)



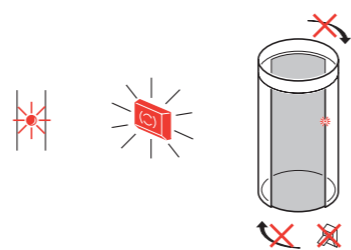
2 Green illuminates continuously



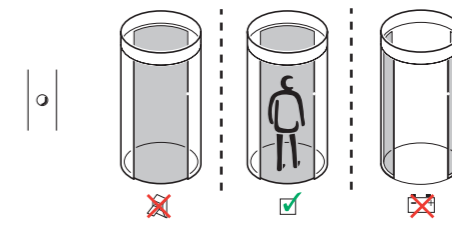
3 Red flashes



4 Red illuminates continuously

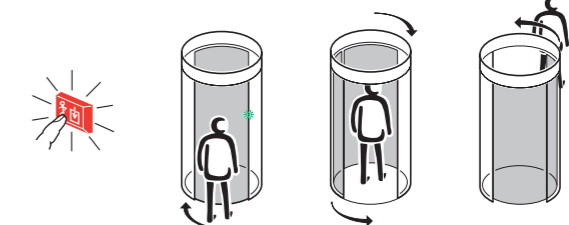


5 Led not illuminated

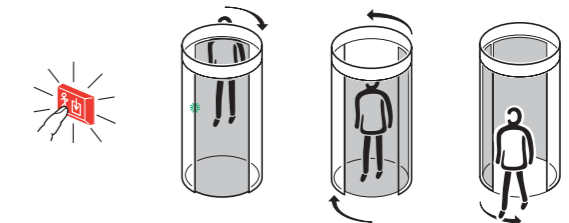


Control panel*

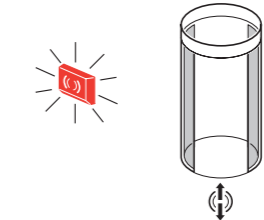
1 One person in



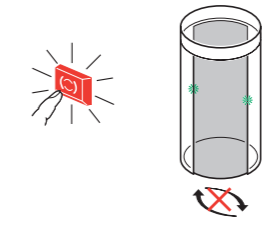
2 One person out



3 Open



4 Locking



5 Alarm/ Buzzeralarm

