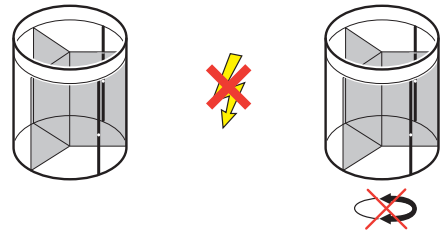


Security devices

1 Security Sensors



2 Failsecure*



Maintenance

Caution! Don't use water near the drive- units and controlboxes.
Warning! Switch OFF the power supply of the Tourlock120 MAUAL during maintenance or other work.

Weekly: Clean the anodised, powdercoated and/or stainless steel surfaces with a wet cloth.

Monthly: Clean the anodised, powdercoated and/or stainless steel surfaces with a wet cloth and a non- aggressive soap. Vacuum clean all the brushes.

Yearly: The Tourlock120 MANUAL needs a major maintenance check once a year. This has to be done by Boon Edam or an approved agent. This applies as well for repairs.

Dealer

For further information: consult the operating manual.

Instructioncard Tourlock 120 MANUAL












Safety- and users instructions

Control panel*

Security devices

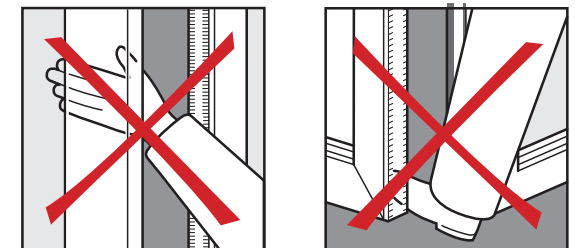
Maintenance

Explanation of the symbols

	Secured side 		Non secured side
	Doorset rotates 120° ACW		3x Authorization at most after using card reader
	Doorset rotates 120° CW		max. 3x 9 sec. Passage possible within 9 seconds
	Doorset rotates manually ACW		No power supply
	Doorset rotates manually CW		Acoustic signal
	Doorset is locked	*	Option
	Authorization after using card reader		



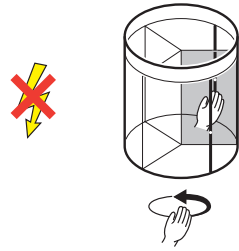
Check the emergency devices, security devices and the general function of the Tourlock120 MANUAL daily!



Safety- and users instructions

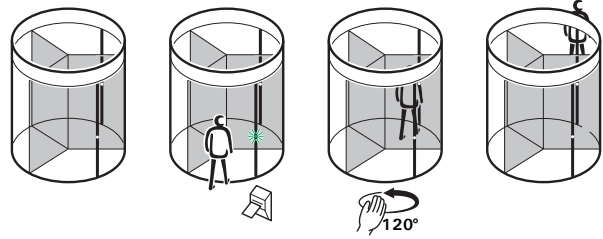
A. The Tourlock 120 MANUAL safety devices

1 Failsafe

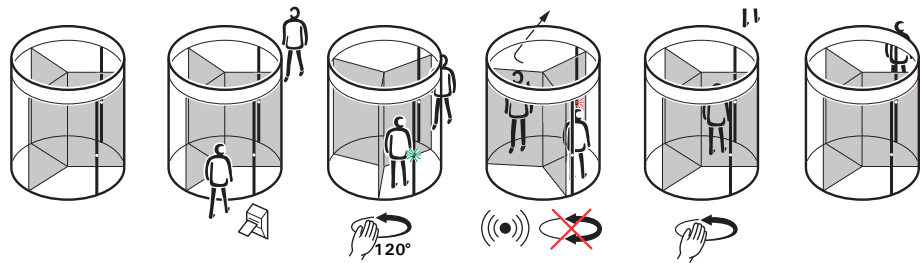


B. The working principles of the Tourlock 120 MANUAL with card reader system

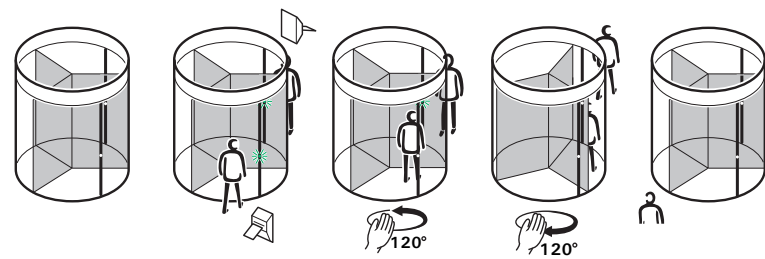
1 One authorized user



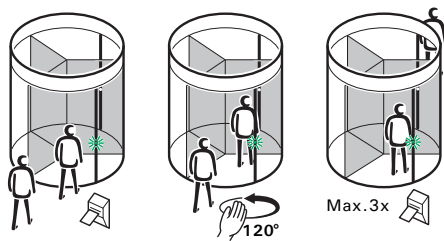
2 One authorized user (from secured side) and one unauthorized user (from non secured side) or the opposite (tailgating)



3 Two authorized users (from secured and non secured side)

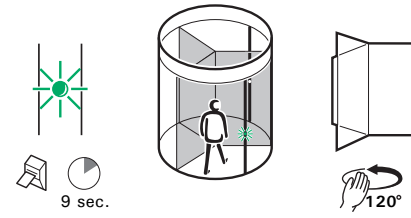


4 Two successively authorized users (from one side)

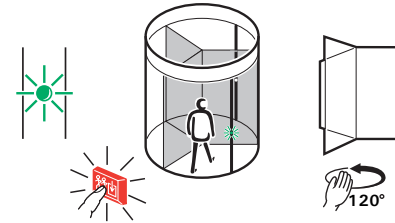


C. The signallamps on the Tournlock 120 Manual

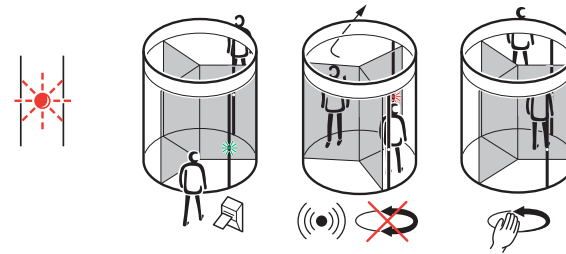
1 Green illuminates (after card reader use)



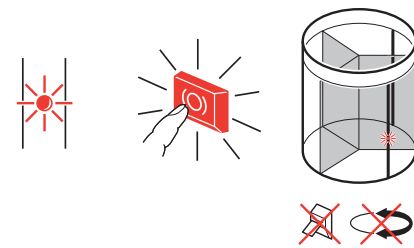
2 Green illuminates continuously



3 Red flashes

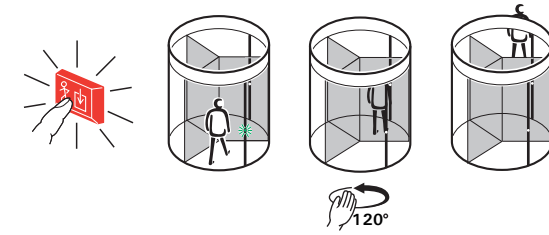


4 Red illuminates continuously

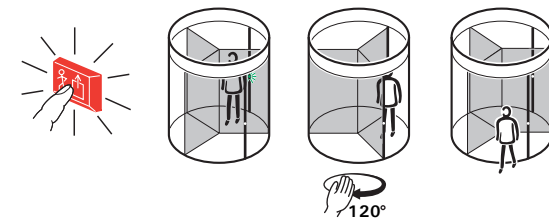


Control panel*

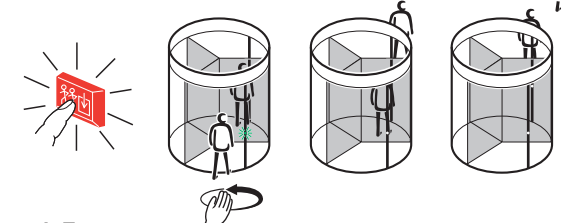
1 One person in



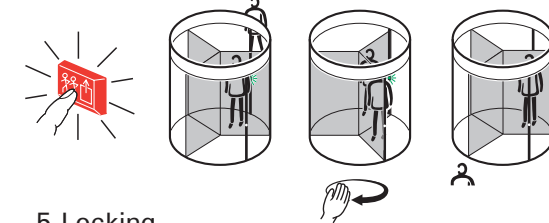
2 One person out



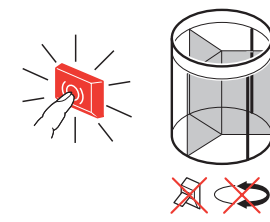
3 Free in



4 Free out



5 Locking



6 Alarm/ Buzzeralarm

